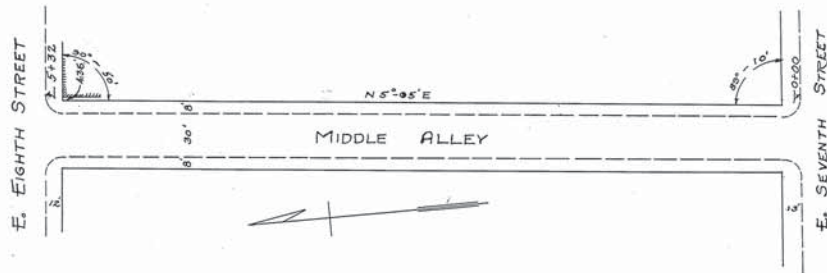
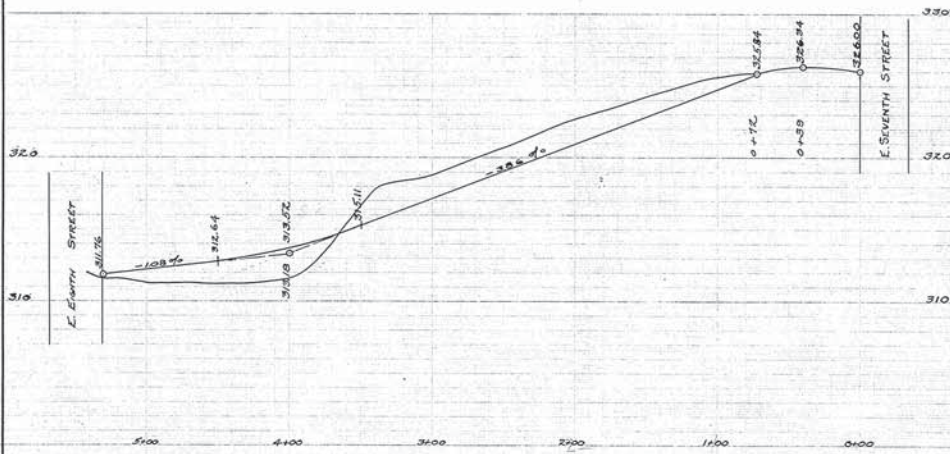


ELMER S. MAXWELL
CITY ENGINEER
FREDERICK-MARYLAND



PLAN & PROFILE OF MIDDLE ALLEY
BETWEEN SEVENTH & EIGHTH STREETS
FREDERICK
MARYLAND
SCALE - HORIZ. 1" = 40'
VERT. 1" = 4'
SEPT. 18, 1928



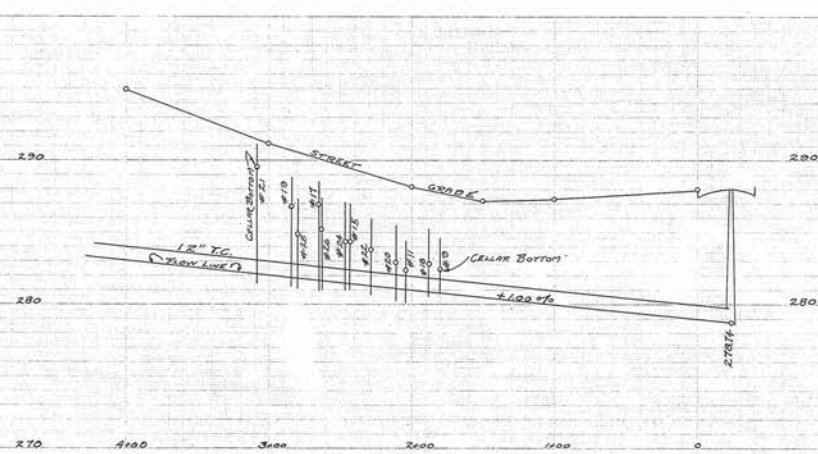
ADOPTED BY THE MAYOR & ALDERMEN OF FREDERICK
BY ORDINANCE PASSED & APPROVED SEPT. 18, 1928

THE MAYOR & ALDERMEN OF FREDERICK
ATTEST: *Anthony G. Henderson* BY *Joseph G. Butler*
CITY REGISTER MAYOR

280912



PLAN OF PROPOSED SEWER
WEST SOUTH STREET
FREDERICK
MARYLAND
SCALE - HORIZ. 1" = 40'
VERT. 1" = 4'
SEPT. 18, 1928



280912
P. 6-2-2