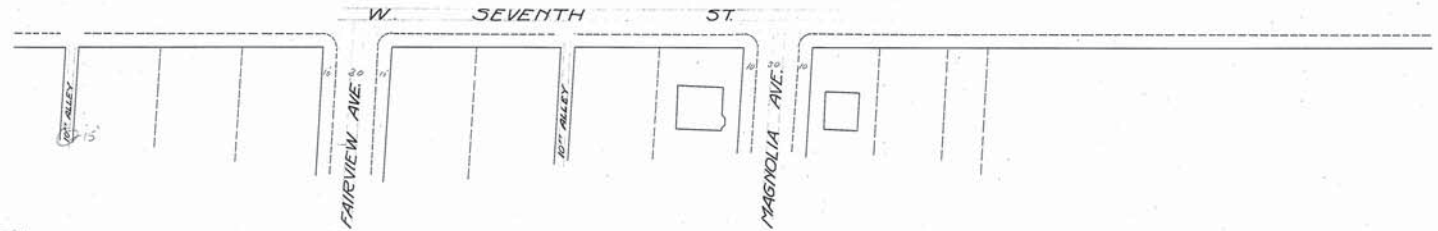


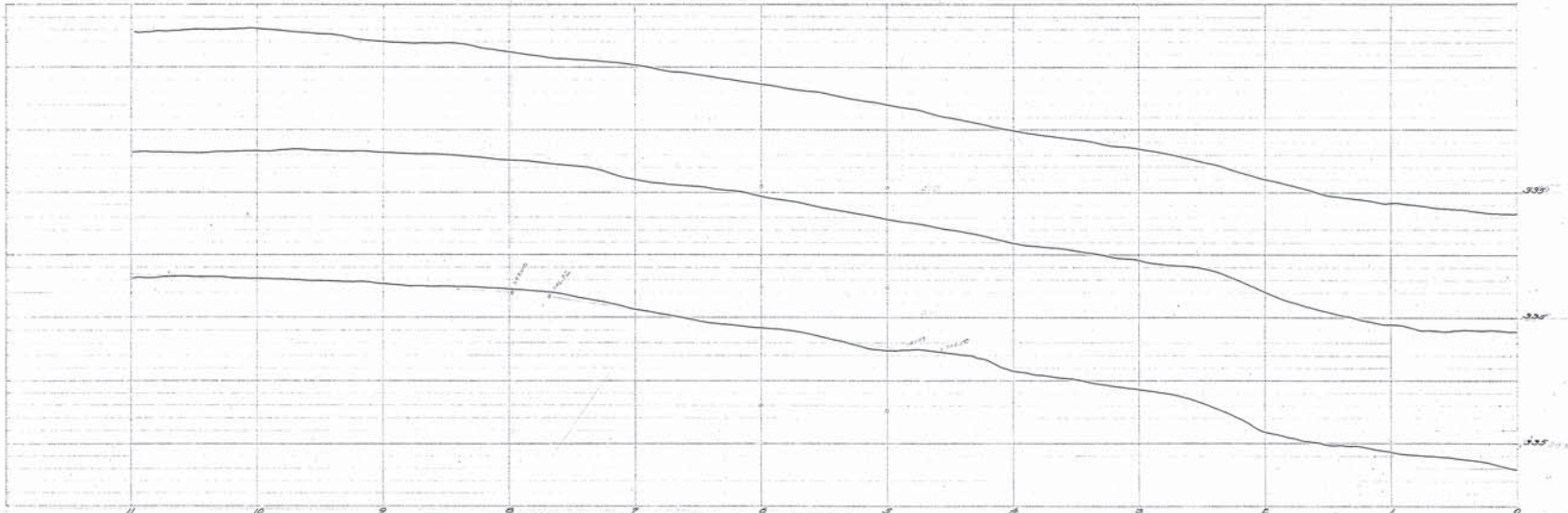
EMERY C. GEUM  
CITY ENGINEER  
FREDERICK - MARYLAND



R.M. — 379.50  
Top W. Main Conn. P.M.  
116 Corner 7th & Dents.

D.M. — 346.78  
Top L. Iron P.M.  
30 Cor. 21st & May, Ave.

B.M. — 319.83  
Top W. base connection P.M.  
N.E. cor. 7th & Berke St.



Adopted by the Mayor and Aldermen of Frederick  
by ordinance passed and approved March 23, 1926

Attest: —  
Aubrey A. Weirsdamm City Registrar  
The Mayor and Aldermen of Frederick  
By Lloyd C. Bullin Mayor

FREDERICK CITY  
PLAN & PROFILE of W. SEVENTH ST.  
SHOWING ESTABLISHED GRADE & STREET LINES  
Frederick, Md.  
Scale: 1" = 40' Hor.  
1" = 4' Vert.  
SHEET 1 of 1 SHEET

No. 240822

240822  
PLAN & PROFILE

WEST 7TH STREET