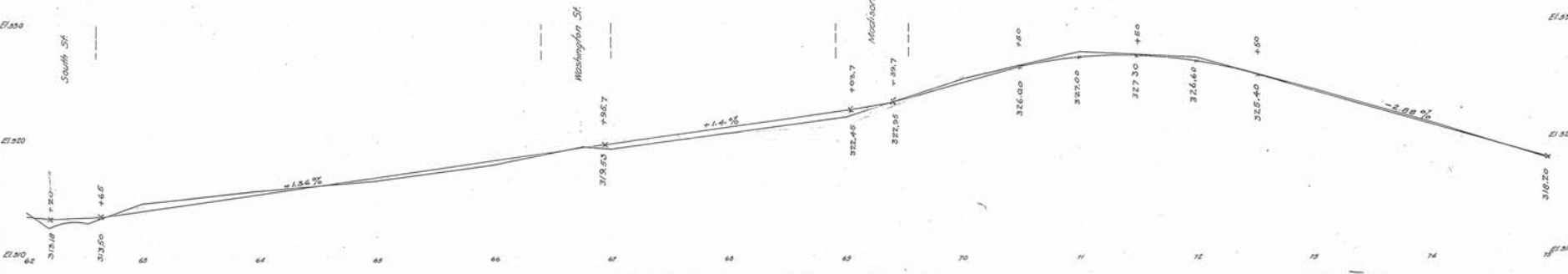
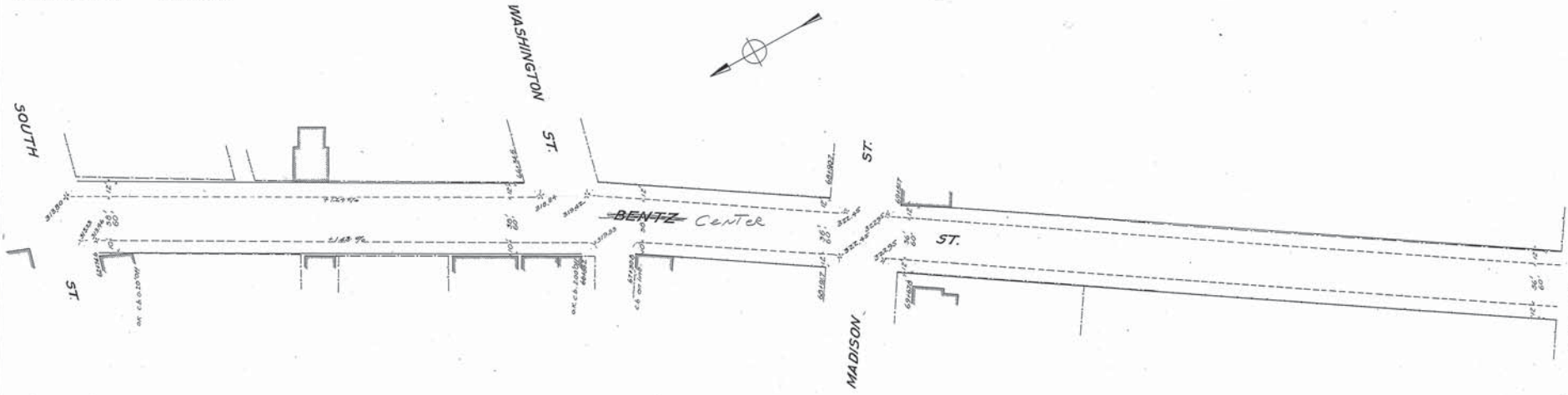


WESTINGHOUSE, CHURCH, KERR, & Co.
ENGINEERS
6 & 10 BRIDGE ST. NEW YORK.

Drawn by J.C. & P.C.
Checked by H.C. 70 6.



Adopted by The Mayor and Aldermen of Frederick.
by ordinance passed and approved Dec. 3, 1909

Attest: *W.A. McCaffrey* City Registrar
The Mayor and Aldermen of Frederick
BY *Edw. Schwantz* Mayor.

FREDERICK CITY
PLAN & PROFILE OF BENTZ STREET.

DRAWING ESTABLISHED GRADE & STREET LINE.
Scale: Plan 1"=40' Hor. Frederick Md. Jan 31, 1908.
Sheet 6 of 6 Sheets

N. Y. No 20479

WESTINGHOUSE CHURCH, KERR & CO. 20479