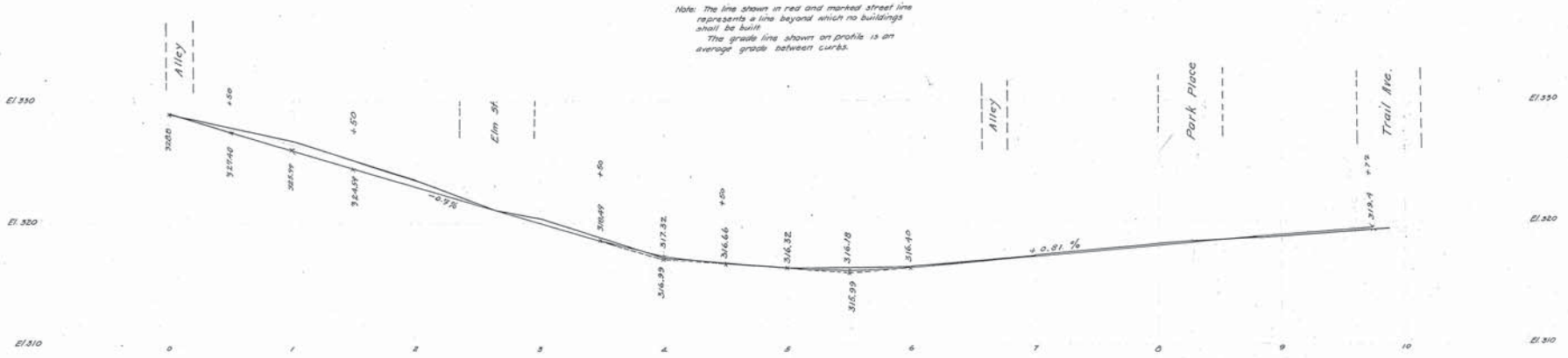
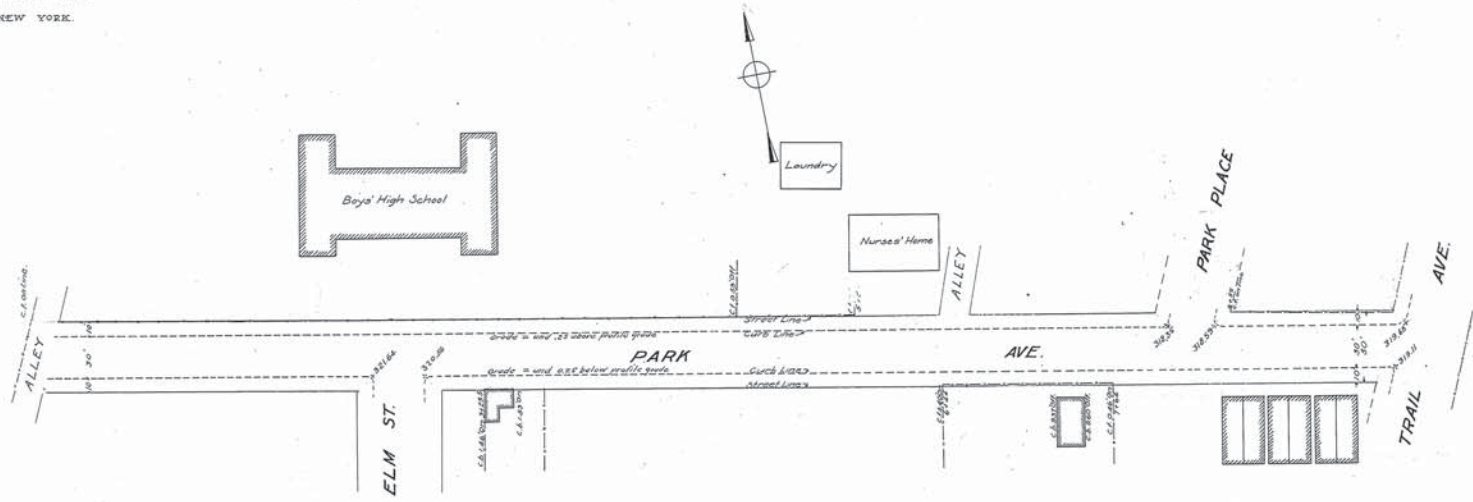


WESTINGHOUSE, CHURCH, KERR & Co.  
ENGINEERS.  
6 & 10 BRIDGE ST., NEW YORK.

Drawn by J.O. & P.G.  
Checked by J.O. & P.G.



Note: The line shown in red and marked street line represents a line beyond which no buildings shall be built.  
The grade line shown on profile is an average grade between curbs.

Adopted by The Mayor and Aldermen of Frederick,  
by ordinance passed and approved Dec. 3, 1909.

Attest:  
*M. A. McCaffrey*  
City Registrar

The Mayor and Aldermen of Frederick,  
By *Geo. Edw. Smith* Mayor.

FREDERICK CITY.  
PLAN & PROFILE OF PARK AVENUE.

SHOWING ESTABLISHED GRADE & STREET LINE.  
Scale: 1" = 40' Vert. 1" = 40' Hor.  
Frederick Md. Jan 30-1906.  
Sheet 1 of 1 Sheet.

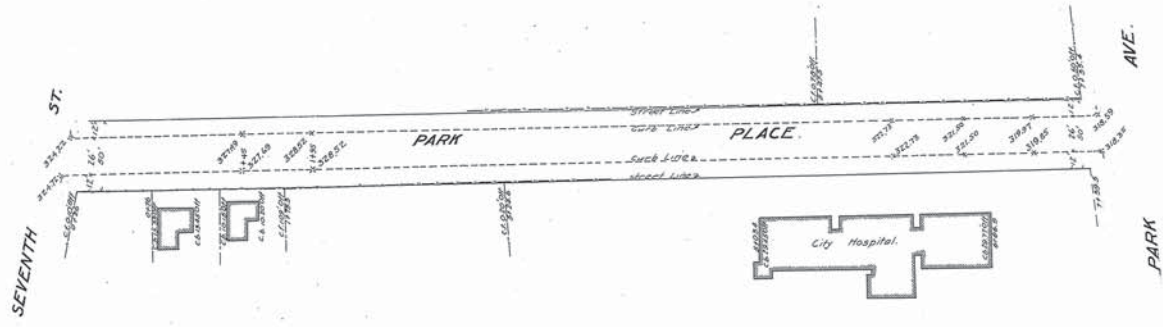
N.Y. No 20471.

WESTINGHOUSE CHURCH, KERR & CO.

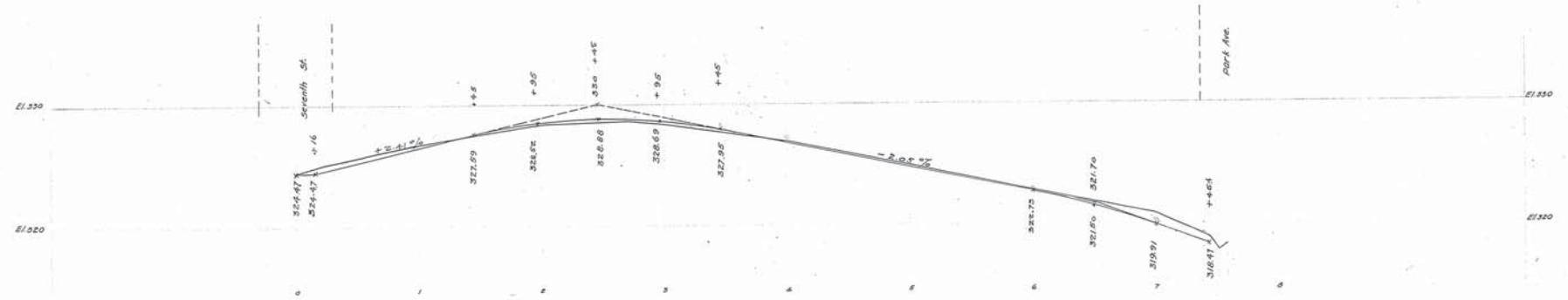
PARK AVENUE

Drawn by J.O.G. D.E.  
Checked by W. & J. E.

WESTINGHOUSE, CHURCH, KERR & Co.  
ENGINEERS  
6 & 10 BRIDGE ST. NEW YORK.



Note: The line shown in red and marked street line represents a line beyond which no buildings shall be built.  
The grade line shown on profile is an average grade between curbs.



Adopted by The Mayor and Aldermen of Frederick,  
by ordinance passed and approved Dec. 3, 1909.

Attest:  
*W.A. McCaffrey*  
City Registrar

The Mayor and Aldermen of Frederick  
by *Geo. Ed. Smith* Mayor.

FREDERICK CITY.  
PLAN & PROFILE OF PARK PLACE.  
SHOWING ESTABLISHED GRADE & STREET LINE.  
Frederick Md. Jan. 31-1908.  
Sheet 1 of 1 Sheet.

N. Y. No 20472.

WESTINGHOUSE CHURCH, KERR & CO. 20472