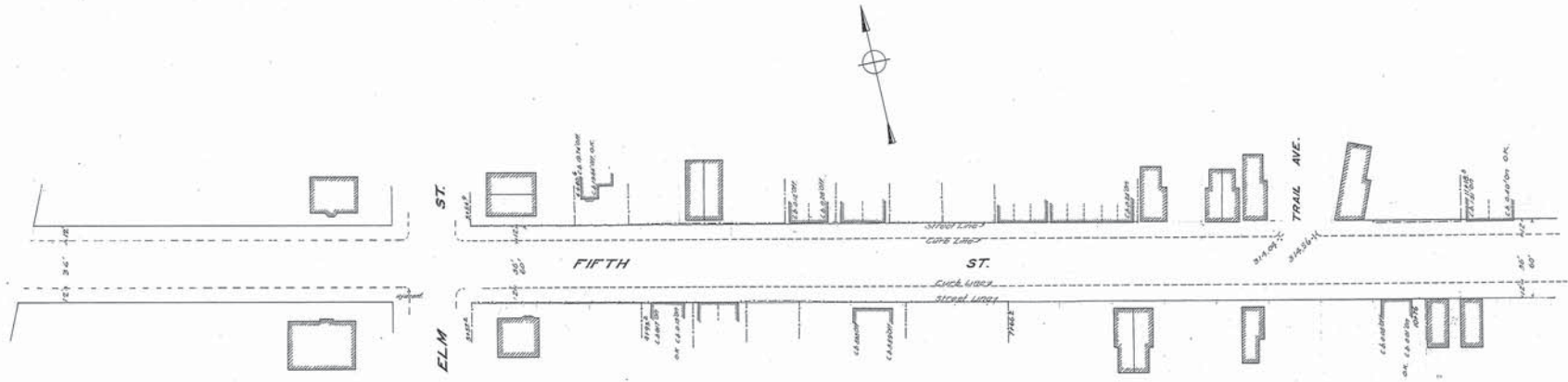
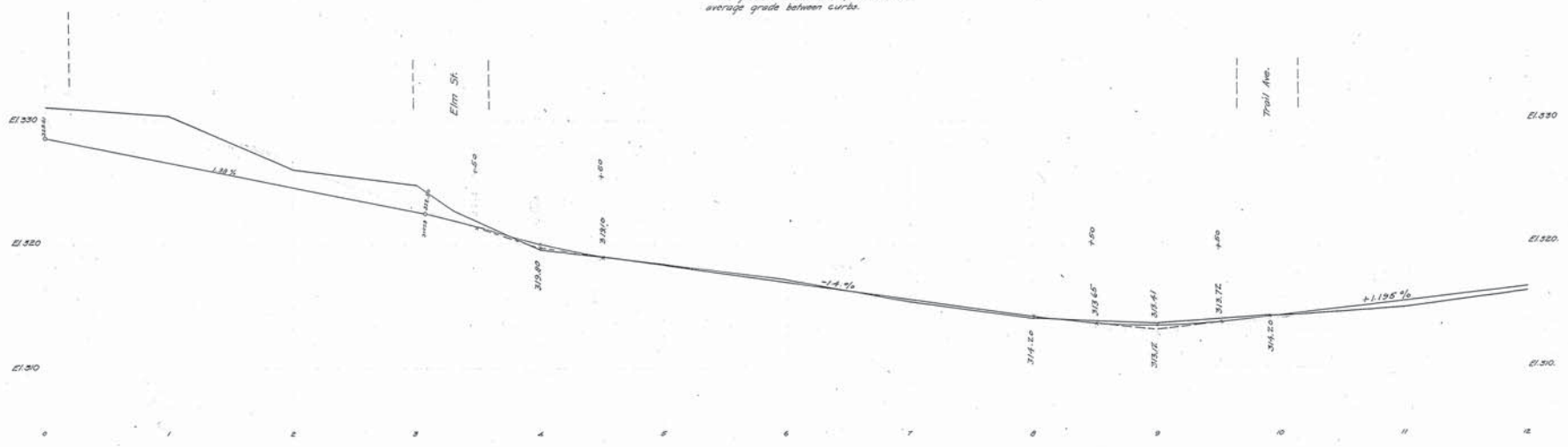


WESTINGHOUSE, CHURCH, KERR & Co.  
ENGINEERS  
8 & 10 BRIDGE ST., NEW YORK.

Drawn by J.Q. O'Neil  
Checked by H.E. O'Neil



Note: The line shown in red and marked streetline represents a line beyond which no buildings shall be built.  
The grade line shown on profile is an average grade between curbs.



Adopted by The Mayor and Aldermen of Frederick  
by ordinance passed and approved Dec. 3, 1909.

Attest-  
*M. A. McCaffrey*  
City Registrar.

The Mayor and Aldermen of Frederick.  
*Geo. E. Smith* Mayor.

FREDERICK CITY.  
PLAN AND PROFILE OF FIFTH STREET.  
SHOWING ESTABLISHED GRADE AND STREET LINE.  
Frederick Md. Oct. 1, 1907.  
Scales: 1" = 40' HORIZ.  
1" = 10' VERT.  
Sheet 1 of 3 Sheets.

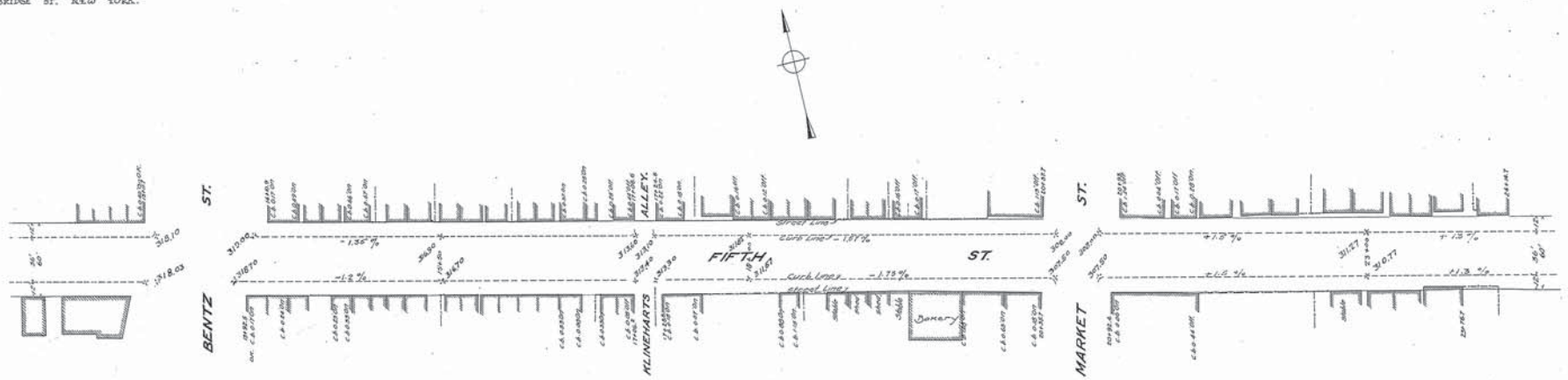
N.Y. No. 19854.

WESTINGHOUSE CHURCH, KERR & CO.

5TH STREET

Drawn by J.C. & B. (2)  
Checked by B.L. 12-79

WESTINGHOUSE, CHURCH, KERR, & Co.  
ENGINEERS  
8 & 10 BRIDGE ST. NEW YORK.



Note: The line shown in red and marked street line represents a line beyond which no buildings shall be built.  
The grade line shown on profile is an average grade between curbs.



Adopted by The Mayor and Aldermen of Frederick,  
by ordinance passed and approved Dec. 3, 1909.

Attest: *Mr. W. B. Coffey*  
City Registrar

The Mayor and Aldermen of Frederick,  
By *Geo. Edwin Smith* Mayor.

FREDERICK CITY  
PLAN & PROFILE OF FIFTH STREET.  
SHOWING ESTABLISHED GRADE & STREET LINE.  
Scales: 1"=16'  
Frederick Md. Oct. 1, 1907.  
Sheet 2 of 3 Sheets.

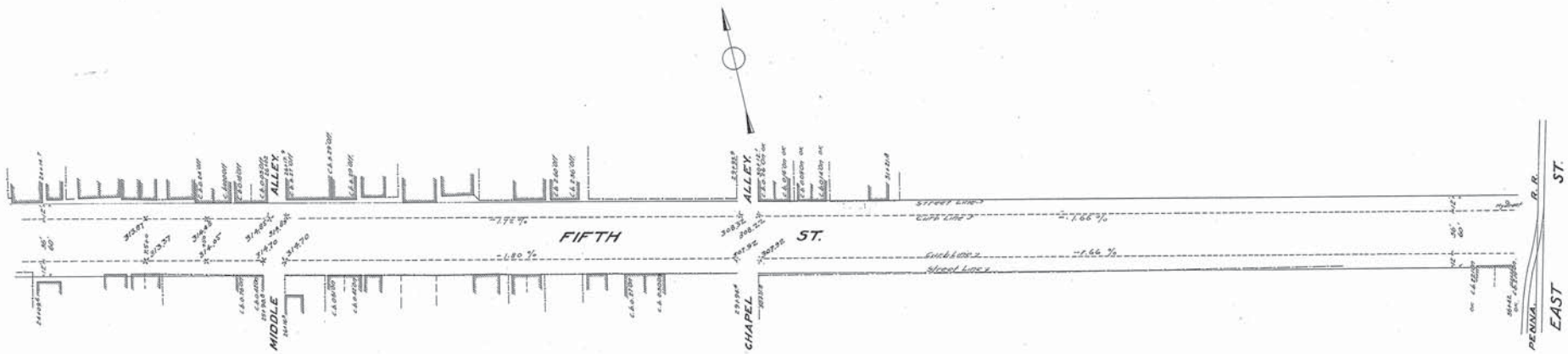
N.Y. No. 19855.

WESTINGHOUSE CHURCH, KERR & CO.

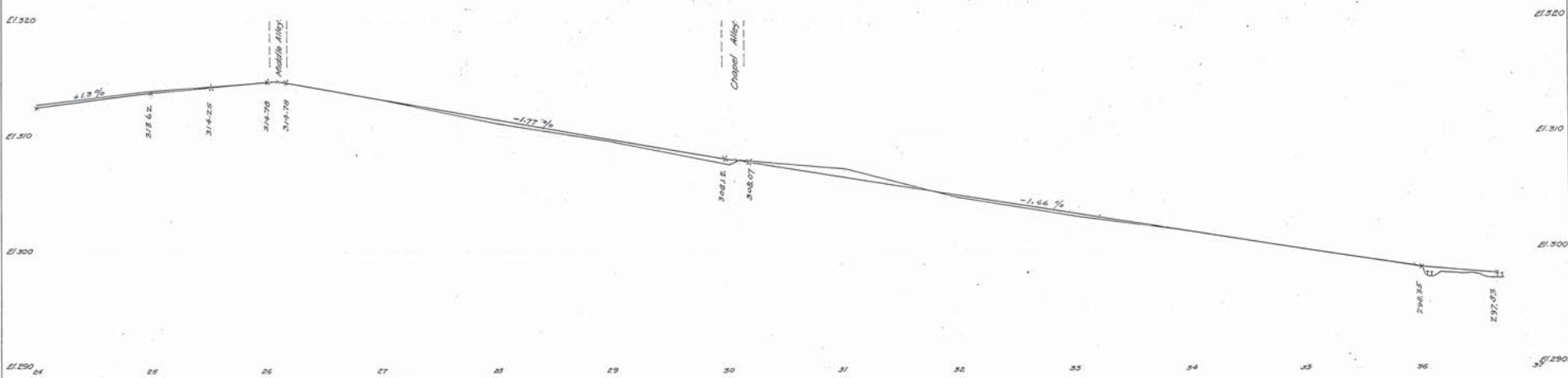
5TH STREET

WESTINGHOUSE, CHURCH, KERR & Co  
ENGINEERS  
8 & 10 BRIDGE ST, NEW YORK.

Drawn by J.O. & R.C.  
Checked by R.L. & T.C.



Note: The line shown in red and marked street line represents a line beyond which no buildings shall be built.  
The grade line shown on profile is an average grade between curbs.



Adopted by The Mayor and Aldermen of Frederick,  
by ordinance passed and approved Dec. 3, 1909

Attest:-  
*M.A. McCaffrey*  
City Registrar

The Mayor and Aldermen of Frederick.  
By  
*Geo. Edwin Smith* Mayor.

FREDERICK CITY.  
PLAN & PROFILE OF FIFTH STREET.

SHOWING ESTABLISHED GRADE & STREET LINE.  
Frederick Md. Oct 1 1907.

Sheet 3 of 3 Sheets

N. Y. No 13856.

WESTINGHOUSE CHURCH, KERR & CO.

5 TH STREET

M. 6 - P. 1